

# The Concrete Collection: Cast.



A broadloom carpet collection, that defines itself by inspired pattern colour placement and its hard-wearing performance.

Cast™ offers six confident colours, made in two concretesque designs; Exposed & Stripped.

## Extended Specifications

Machine Gauge	1 / 10"
Stitches / 10cm	40
Fire Index	3 (SANS 10177-IV) Cfl-s1(EN ISO 9239-1)
Colour fastness To:	
i) Light	7 (ISO 105-B02)
ii) Rubbing (wet)	4-5 (ISO 105-X12)
ii) Rubbing (dry)	4-5 (ISO 105-X12)
iii) Water	4-5 (ISO 105-E01)
Electrostatic Propensity	≤ 2.0kV (ISO 6356 & EN 1307)
Static Control	Permanent
VOC Tested	Pass

# The Concrete Collection: Cast - Exposed.

A design characterised by the smooth industrial finish of solid cast concrete.



The Concrete Collection: Cast - Exposed | Mixed

## Product Information

Meet Exposed, the first design of The Concrete Collection. It combines the elegant, subtle texture of concrete with the stylish comfort of carpet. This hard-wearing surface is made with Solution Dyed Nylon, delivering strength at the core. We couldn't have made it better ourselves - wait, we did.



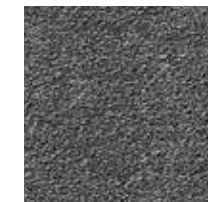
Flint



Clay



Silt



Shale



Basalt



Lava

## Extended Specifications

Use Classification	Heavy Commercial
Construction	Pattern Colour Placement
Product Description	Heavy Commercial, SDN, Tufted Broadloom
Recycled Content	Pile Yarn (certain colours)
Pattern Repeat	±97cm W and ±99cm L
Yarn Type	Stainproof SDX & Stainproof Eco SDX (Solution Dyed Nylon)
Yarn Mass	1200 g/m <sup>2</sup>
Pile Height	7mm (±0.5mm)
Total Thickness	±9.5mm (±0.5mm)
Total Mass	±2680 g/m <sup>2</sup>
Standard Width	4m

### BILL OF QUANTITIES:

- Belgotex CAST EXPOSED 4m broadloom is manufactured from Stainproof SDX & Stainproof Eco SDX Blend (Solution Dyed Nylon).
- This product is to be laid in accordance with the SANS 10186 fitting code of practice.
- Belgotex recommends the use of carpet protector mats where castor wheels are used.



# The Concrete Collection: Cast - Stripped.

A design characterised by the rugged natural appearance of raw concrete.

## Product Information

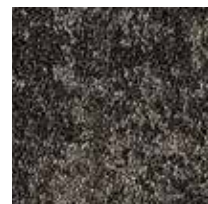
The raw beauty of cement has inspired this high-performance carpet collection. Made to disrupt industrial urban space with a soft texture that delivers edge and grit without sacrificing comfort. Cast™ is a collection that transcends commercial use in the form of a 'cement look' carpet for the modern pad.



Flint



Clay



Silt



Shale



Basalt

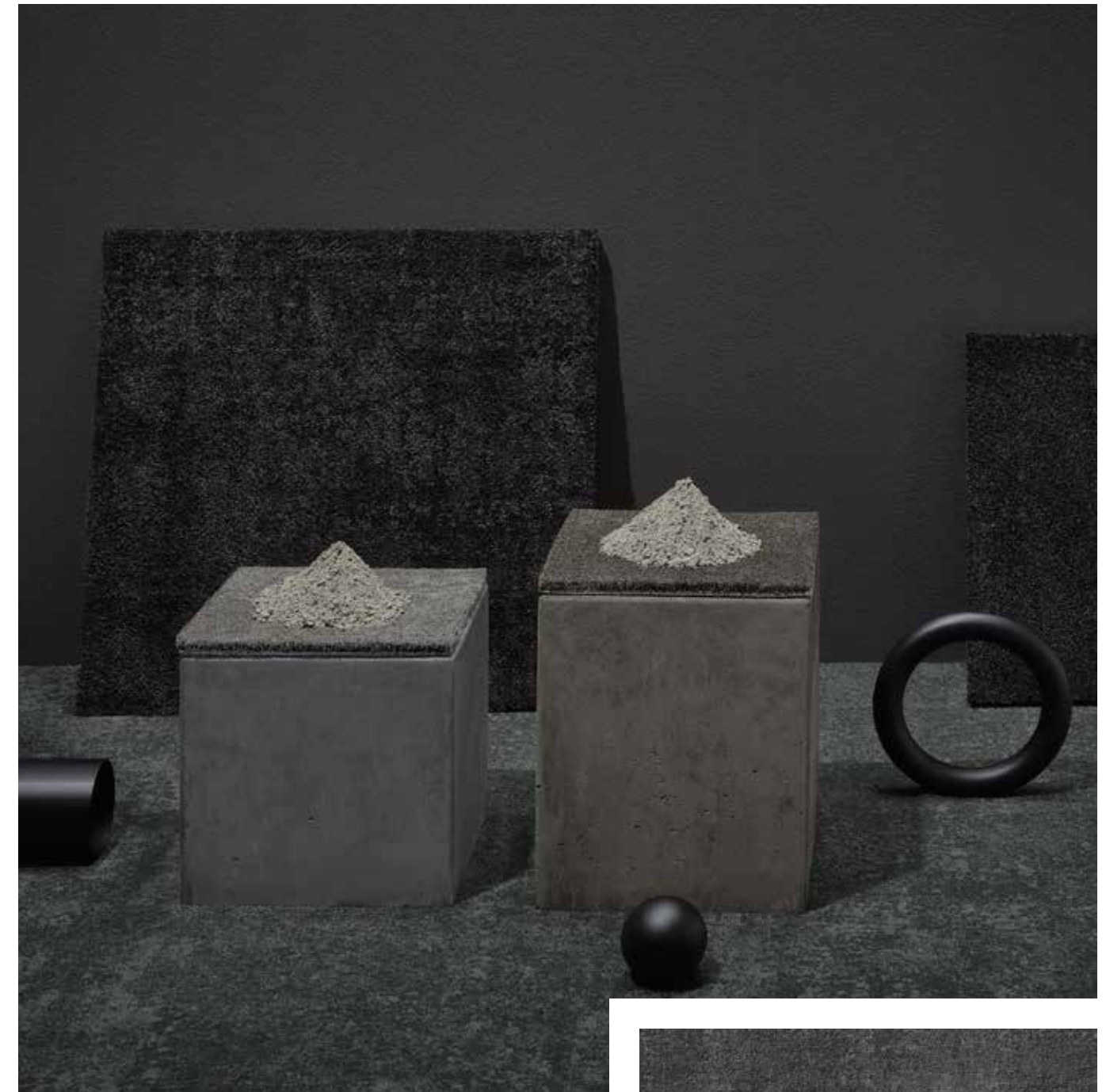


Lava

### BILL OF QUANTITIES:

- Belgotex CAST STRIPPED 4m broadloom is manufactured from Stainproof SDX & Stainproof Eco SDX Blend (Solution Dyed Nylon).
- This product is to be laid in accordance with the SANS 10186 fitting code of practice.
- Belgotex recommends the use of carpet protector mats where castor wheels are used.

The Concrete Collection: Cast - Stripped | Mixed



## Extended Specifications

Use Classification	Heavy Commercial
Construction	Pattern Colour Placement
Product Description	Heavy Commercial, SDN, Tufted Broadloom
Recycled Content	Pile Yarn (certain colours)
Pattern Repeat	±97cm W and ±99cm L
Yarn Type	Stainproof SDX & Stainproof Eco SDX (Solution Dyed Nylon)
Yarn Mass	1200 g/m <sup>2</sup>
Pile Height	7mm (±0.5mm)
Total Thickness	±9.5mm (±0.5mm)
Total Mass	±2680 g/m <sup>2</sup>
Standard Width	4m